



APPLY ONLINE





www.tenantoptions.com.au

1. Select sign up and proceed to create a tenant profile with your email address, you will be sent a confirmation email to log in. Note: Please also check your Spam/Junk folder for the email.
2. You will be required to submit a reference request for your personal, employment and residential references via Tenant Options. Tip: Gather the email addresses and contact numbers of your references before you start.
3. To add a post applicant select "Add Applicant". Once all profiles are completed you will be able to apply for a property by clicking the "Apply for a Property" button on the home & applications page. Note: you do not need to wait until your referees respond before applying for a property.
4. When searching for a property, start typing the address and it will appear from a list. Click on the property you wish to apply for and follow the prompts. Note: You will receive an email when your application has been submitted.

If you require assistance check the FAQ link or the "Contact Us" options in the tenant options website.



3/113 Jubilee West Highway Mount Gambier SA

2  1  1 

Malseeds Property Management Team is pleased to present 3/113 Jubilee Highway West, Mount Gambier for lease.

This low maintenance unit offers comfortable and practical living in a convenient location.

Features include:

- Spacious master bedroom with built-in robe
- Functional kitchen complete with electric stove, oven and breakfast bar
- Comfortable lounge room with heating
- Full bathroom featuring both a walk-in shower and bathtub
- Separate toilet for added convenience

Type : Unit
Price : \$300 pw
View : <https://www.malseeds.com.au/lease/sa/south-east/mount-gambier/residential/unit/8702330>



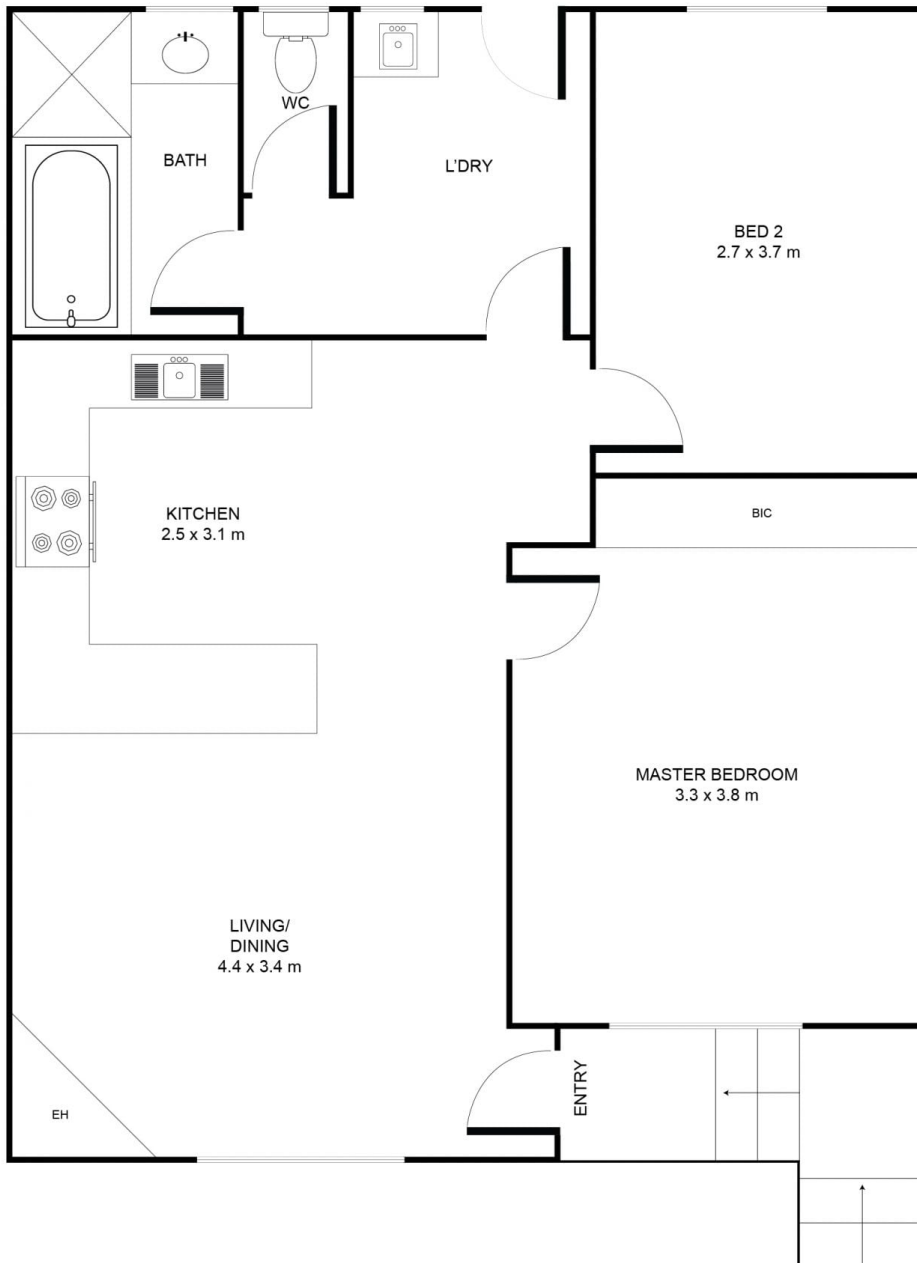
Malseeds Property Management
08 8724 9999

[For full version visit the website](https://www.malseeds.com.au)

<https://www.malseeds.com.au>
Malseeds Real Estate



This drawing is for illustration purpose only. All measurements are approximate
only information intended to be relied upon should independently verified.



INTERNAL AREA: 61.9 sqm
EXTERNAL AREA: 1.3 sqm
TOTAL AREA: 63.2 sqm