



www.tenantoptions.com.au

1. Select Sign Up and proceed to create a Tenant profile with your email address, you will be sent a confirmation email to log in. Note: Please also check your Spam/Junk folder for the email.
 2. You will be required to submit a reference request for your personal, employment and residential references via Tenant Options. Tip: Gather the email addresses and contact numbers of your references before you start.
 3. To add a post applicant select "Add Applicant". Once all profiles are completed you will be able to apply for a property by clicking the "APPLY" for a Property button on the home & applications page. Note: you do not need to wait until your referees respond before applying for a property.
 4. When searching for a property, start typing the address and it will appear from a list. Click on the property you wish to apply for and follow the prompts. Note: You will receive an email when your application has been submitted.
- If you require assistance check the FAQ link or the "Contact Us" options in the tenant options website.



8 Jarrah Street Mount Gambier SA

3 1 1

Malseeds Real Estate Property Management team is pleased to present 8 Jarrah Street, Mount Gambier.

This freshly updated three-bedroom home is ideally located in the North West area, offering convenient access to local schools and amenities, making it a great option for families or those seeking a well-positioned home.

The property has recently been freshly painted and features a brand-new kitchen, providing a clean and refreshed feel throughout.

The home offers three bedrooms, with one bedroom including a built-in robe. The open plan layout connects the kitchen, dining, and lounge areas, creating a comfortable

Type : House

View : <https://www.malseeds.com.au/lease/sa/south-east/mount-gambier/residential/house/8689563>

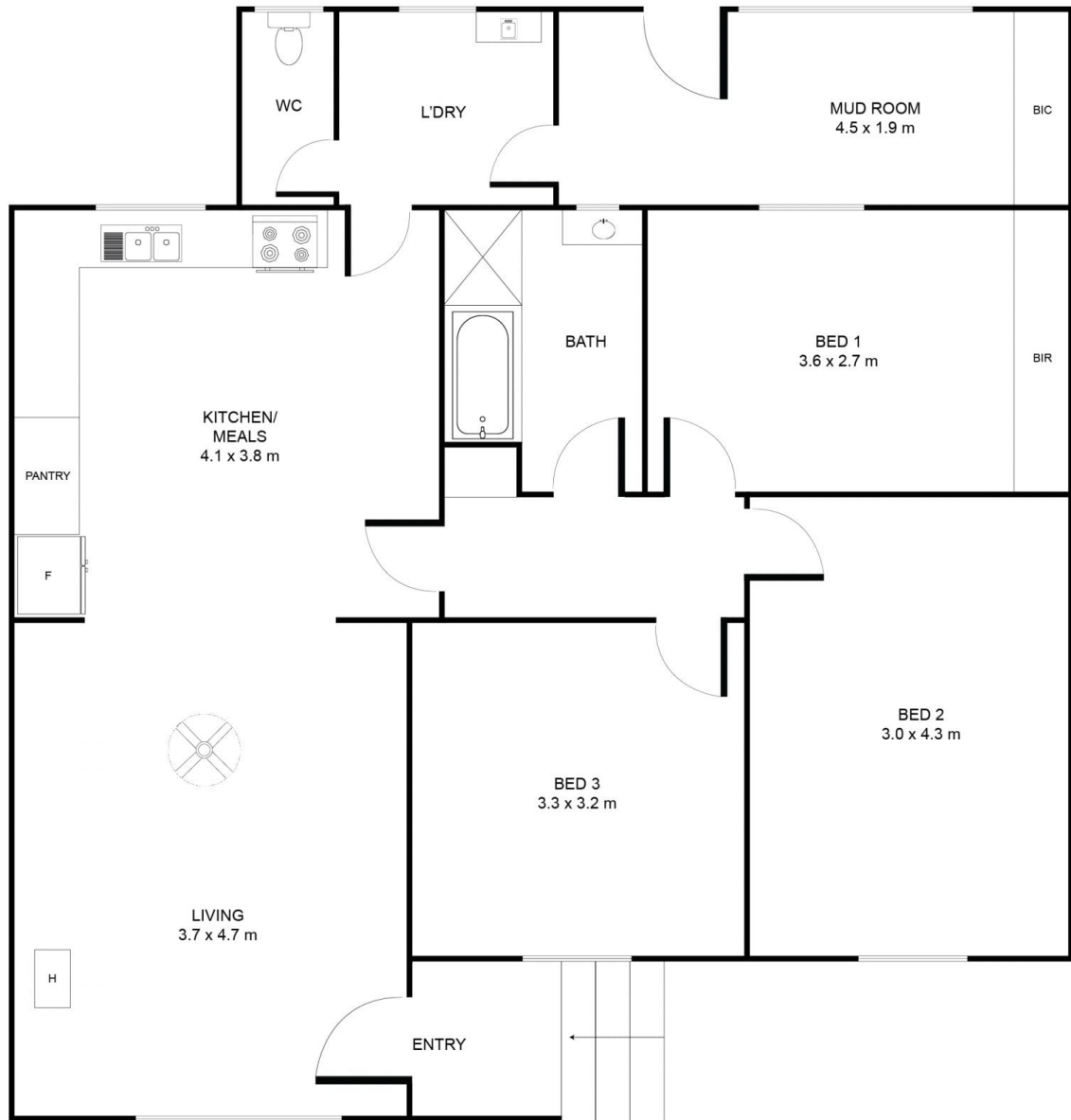


Malseeds Property Management
08 8724 9999

[For full version visit the website](https://www.malseeds.com.au)

8 JARRAH STREET, MOUNT GAMBIER

This drawing is for illustration purpose only. All measurements are approximate
only information intended to be relied upon should independently verified.



INTERNAL AREA: 126.3 sqm
EXTERNAL AREA: 150 sqm
TOTAL AREA: 276.3 sqm