

6 Acorn Drive Mil Lel SA

5 2 6

Set on a slight rise this large Empak home is full of natural light and overlooks green pastures, livestock and is amongst newly established homes. Sitting on 3.6 acres (approx) this five bedroom, two bathroom home is only 3 years old and ready to enjoy!

Walking distance to the Mil Lel primary school and showground and only a 12 minute drive to the heart Mount Gambier.

There is so much to love about this property and the country living lifestyle it has to offer.

Key Internal Features:

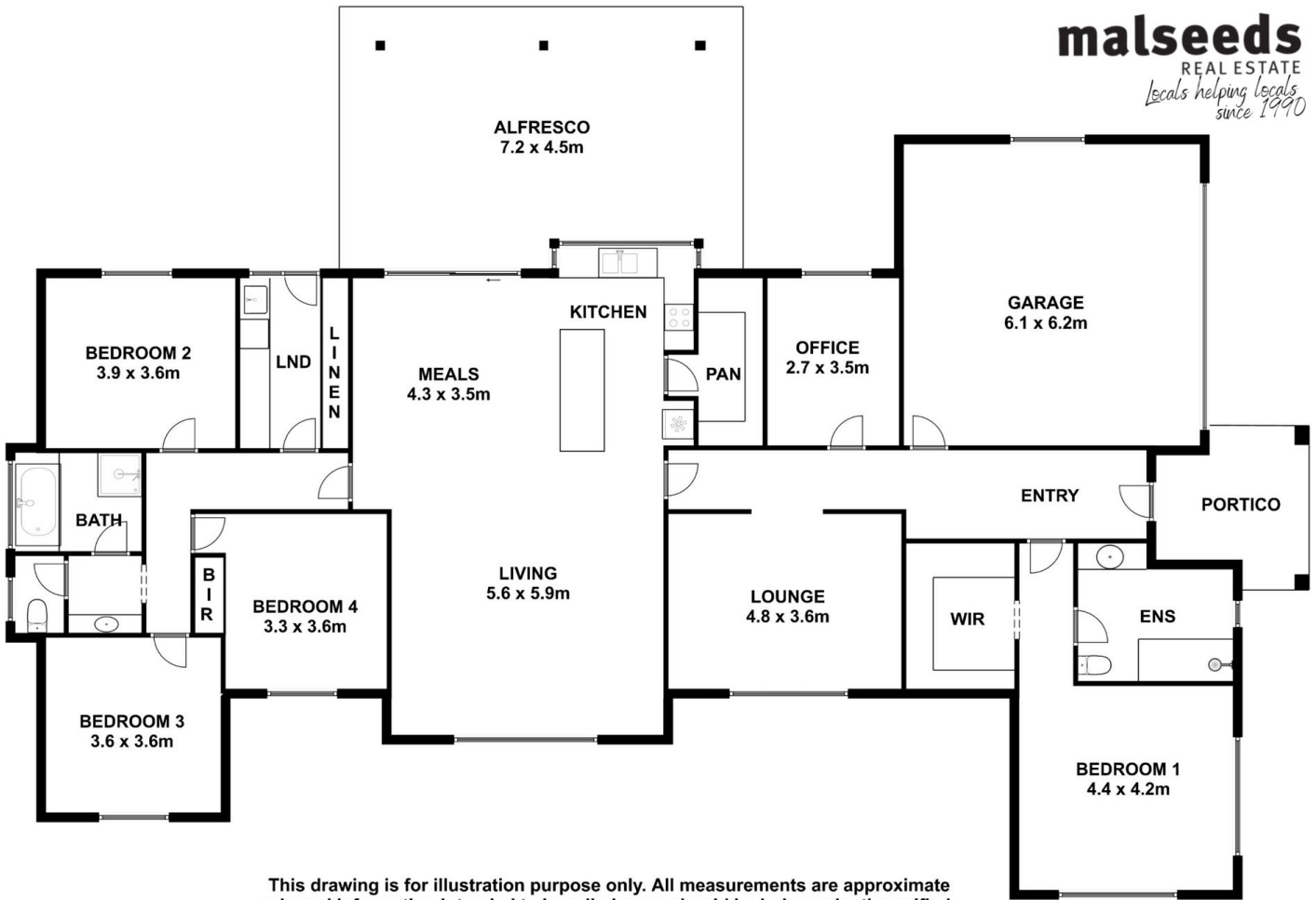
- * Generous open plan living and dining with slow combustion heater and split system
- * Second living room is generous in size and can be shut

Land Size : 14700 sqm

View : <https://www.malseeds.com.au/sale/sa/-/mil-l-el/residential/acreagesemirural/7202985>



Wendy Flint
08 8724 9999



This drawing is for illustration purpose only. All measurements are approximate only and information intended to be relied upon should be independently verified.