



9 Ash Court Mount Gambier SA

4 2 3

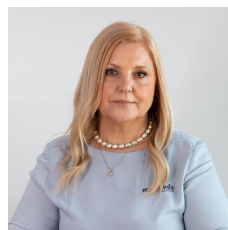
Situated in the increasingly popular Montebello area of town resides 9 Ash Court - built in 2008, this home offers plenty of space for the growing family and a great list of features, whilst being only minutes walk from the Tafe and Uni SA campus.

Land Size : 900 sqm

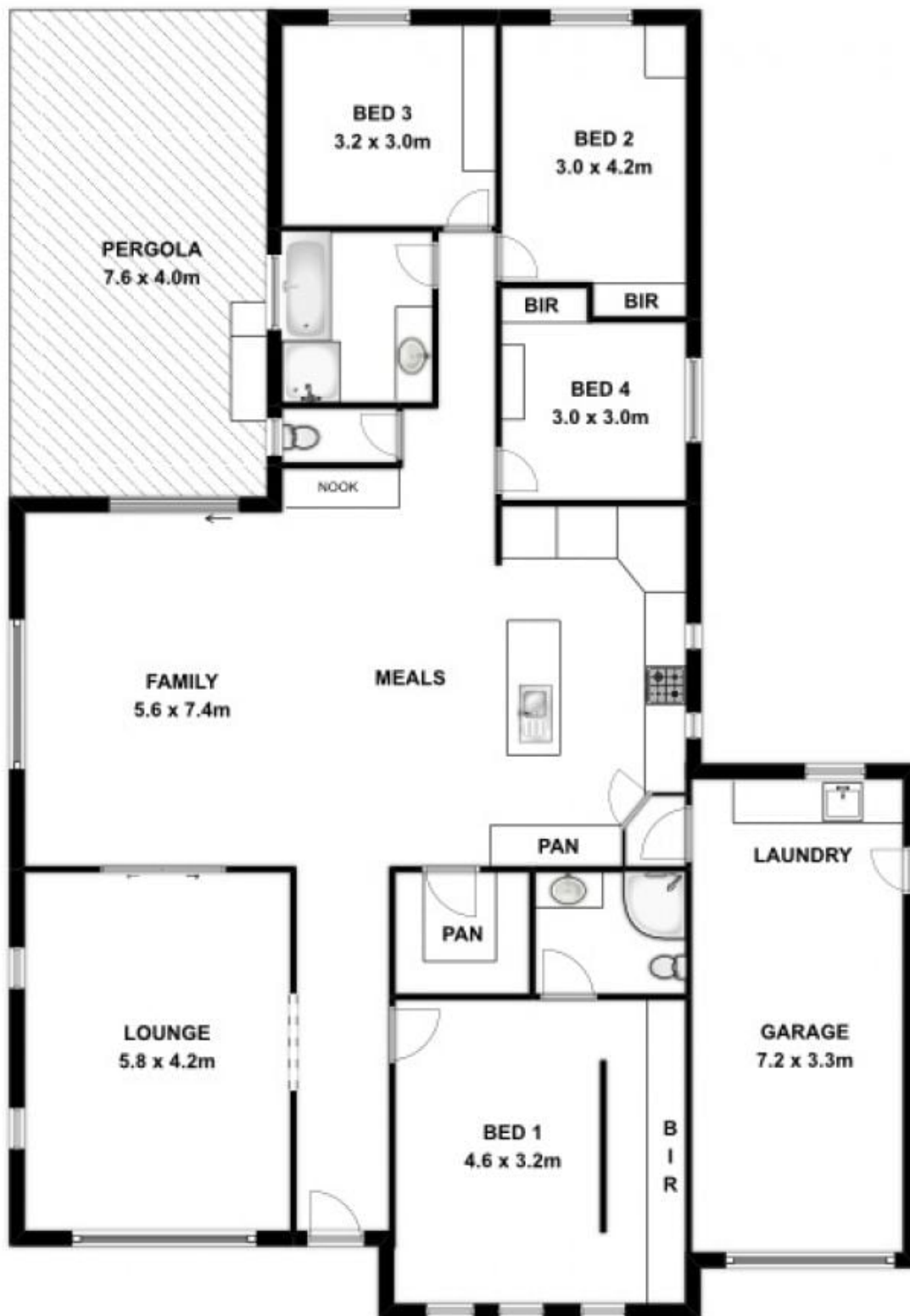
View : <https://www.malseeds.com.au/sale/sa/south-east/mount-gambier/residential/house/6253270>

The large, open plan living/dining/kitchen space features a built in study hutch, R/C air conditioning and north facing aspect, with gas cooking, dishwasher and enormous pantry space. This flows through to the 2nd, carpeted living area, with the convenience of sliding doors to either combine or separate spaces.

The master bedroom features plenty of built in robes and a spacious ensuite, with BIR in the 3 remaining bedrooms, all carpeted and of generous size. Bedrooms 2 & 4 also include built in desks.



Wendy Flint
08 8724 9999



**This drawing is for illustration purpose only.
All measurements are approximate only and information
intended to be relied upon should be independently verified.**