



6 Eltolla Court Mount Gambier SA

3 2 4

Malseeds Real Estate are pleased to present a family home with a recently refurbished roof and roller shutters on the front. Situated in a quiet cul-de-sac and ideally positioned opposite a playground.

The main bedroom has an ensuite and large walk through robe while the 2 remaining bedrooms have built-ins.

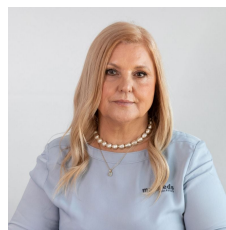
Open plan dining/kitchen/ family room with a slow combustion heater and ducted gas heating throughout the home.

The kitchen has ample cupboards, walk-in pantry, dishwasher and even comes with the fridge!

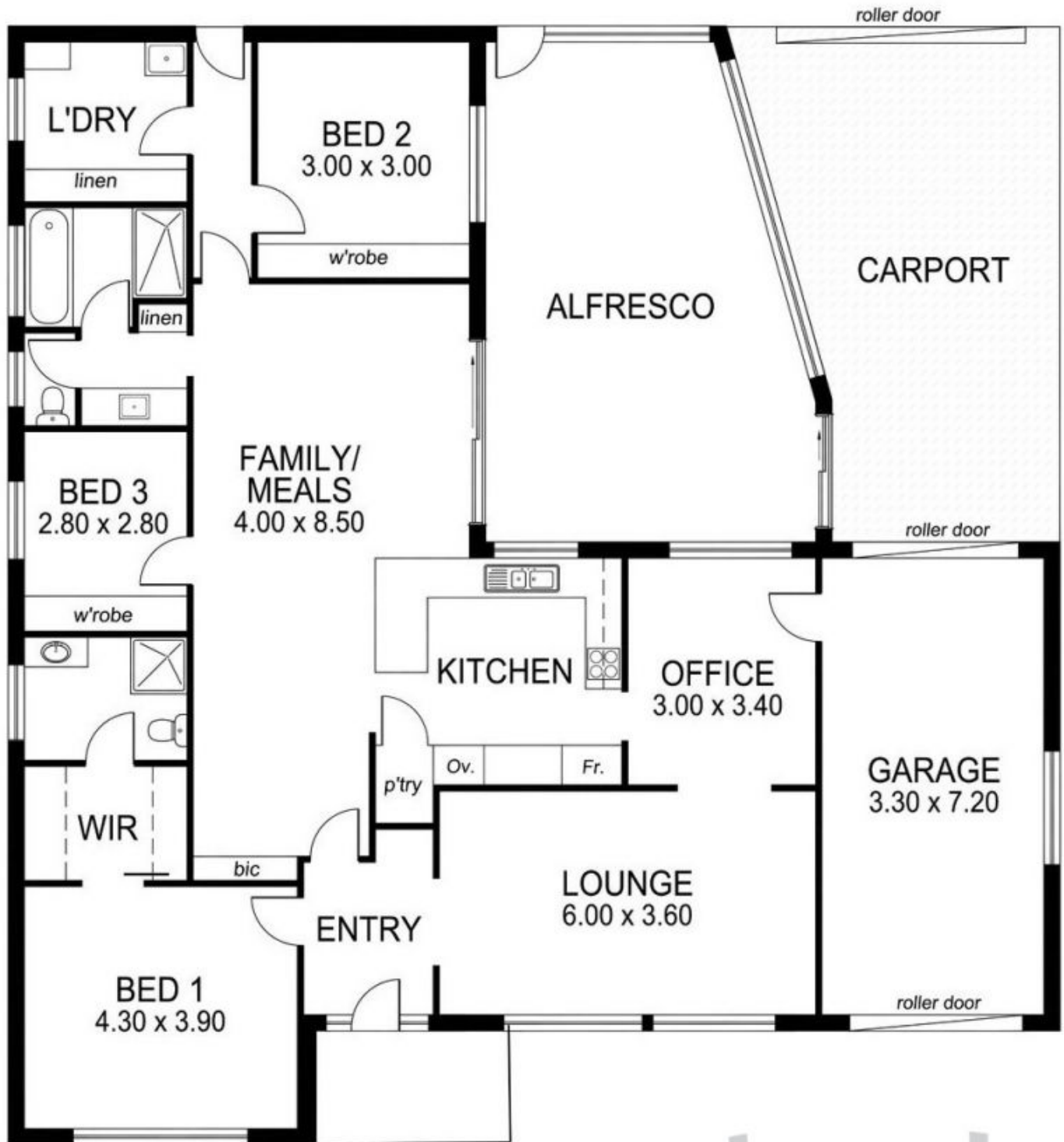
The three way bathroom has custom built vanity and is centrally located to the bedrooms.

Land Size : 701 sqm

View : <https://www.malseeds.com.au/sale/sa/south-east/mount-gambier/residential/house/5948018>



Wendy Flint
08 8724 9999



This drawing is for illustration purposes only.
 All measurements are approximate only and information
 intended to be relied upon should be independently verified.