



36 Lake Terrace Mount Gambier SA

4 2 2

With stunning views looking over the city Malseeds are pleased to present 36 Lake Terrace West where this double storey home is situated on a generous corner allotment of approximately 842sqm.

Upon entering the home you are greeted with timber floors that have been carried throughout. Open plan living with those amazing views really allows this home to be a great entertainer.

Features of this home include:

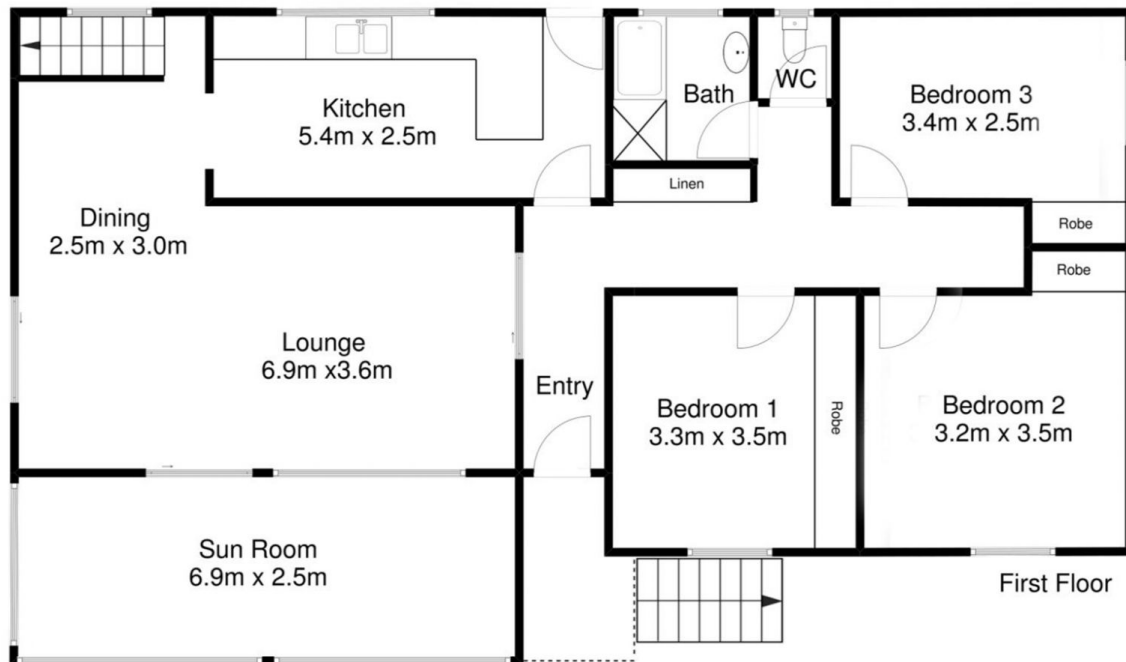
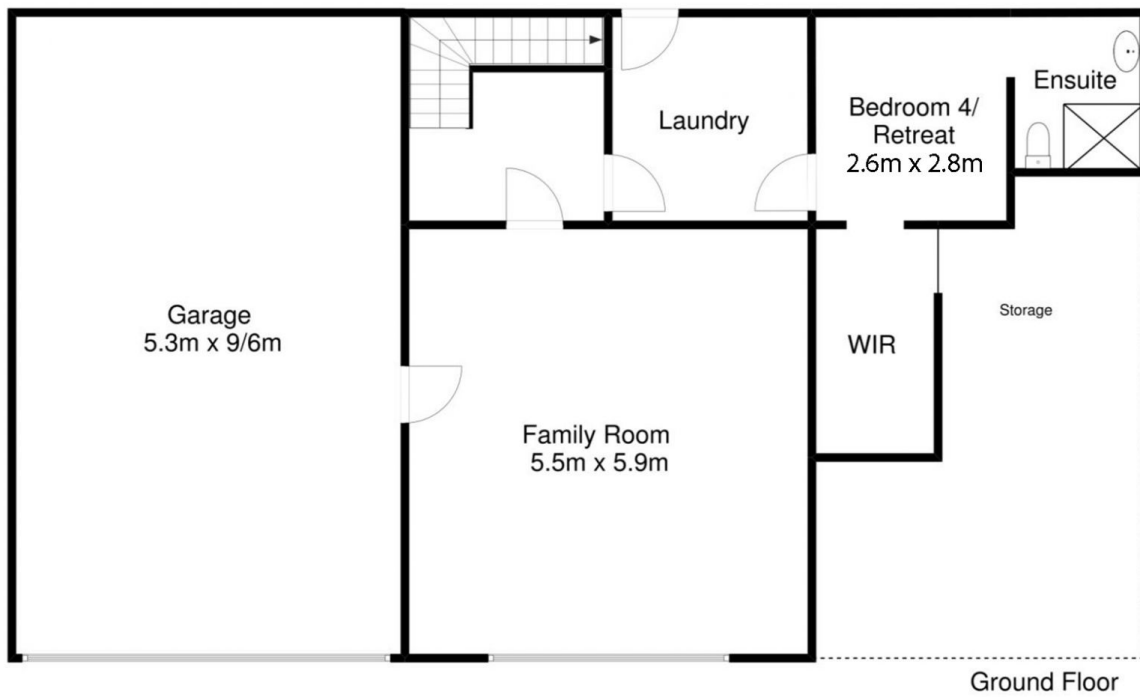
- Open plan living and dining with split system, wall heater and sliding door access to the roof
- Sunroom at the front of the home
- New kitchen with a Butlers walk in pantry
- Three bedrooms all with BIR's and the main bathroom with shower, vanity, bath and a seperate toilet complete the

Land Size : 842 sqm

View : <https://www.malseeds.com.au/lease/sa/south-east/mount-gambier/residential/house/5946569>



Malseed's Property Management
08 8724 9999



Disclaimer: Floor Plan measurements are approximate and are for illustrative purposes only. While we do not doubt the floor plans accuracy, we make no guarantee, warranty or representation as to the accuracy and completeness of the floor plan