



43 Wehl Street Mount Gambier SA

3  1  2 

Situated in the centre of town, Malseeds are pleased to present 43 Wehl Street North. This dolomite fronted home is ideal for families looking to be a short walk from parks, playgrounds and the Main Street.

Entering the home you are greeted with leadlight front doors and beautiful floorboards which have been carried throughout the home. The high ceilings and long hallway are also a lovely feature of this stunning property.

Two spacious bedrooms are at the front home and include feature fireplaces, carpeted and the master including built in wardrobes. The third bedroom is at the rear of the home and is of a good size.

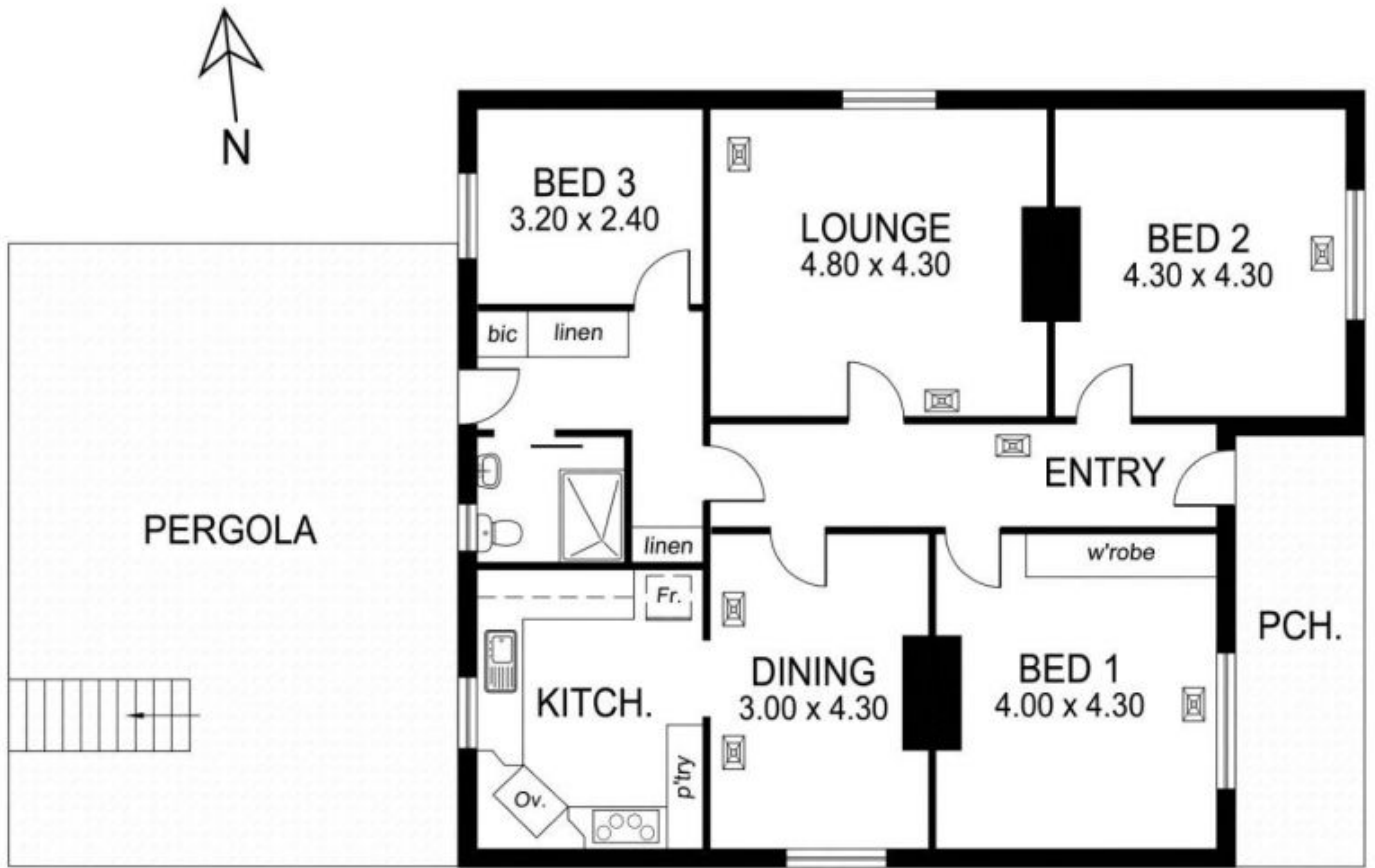
Walking into the separate lounge room you will notice the amazing detail on the ceiling. The open fireplace is

Land Size : 567 sqm

View : <https://www.malseeds.com.au/lease/sa/south-east/mount-gambier/residential/house/5708739>



Malseed's Property Management
08 8724 9999



This drawing is for illustration purposes only.
All measurements are approximate only and information
intended to be relied upon should be independently verified