



447, 449, Mingbool Road Mil Lel SA

15 🏠 5 🚗 3 🚗

Malseeds Real Estate is pleased to present an exceptional and unique investment opportunity: four individual homes - 447, 449, 451, and 453 Mingbool Road, Mil-Lel plus a substantial rear block of land. This rare offering totals approximately 12,571sqm, combining a 5,226sqm (approx.) allotment with 4x Mount Gambier Limestone homes and a separate 7,345sqm (approx.) vacant landholding.

Each of the four solid limestone dwellings boasts its own character and functional layout, presenting strong rental potential and the flexibility of multiple income streams. Whether you're a savvy investor seeking to grow your portfolio or a buyer in search of a multi-dwelling lifestyle opportunity, this property is as versatile as it is valuable.

Type : Rural
Land Size : 12571 sqm
View : <http://www.malseeds.com.au/sale/sa/-/mil-le/l/residential/rural/8450596>



Jason Malseed
08 8724 9999

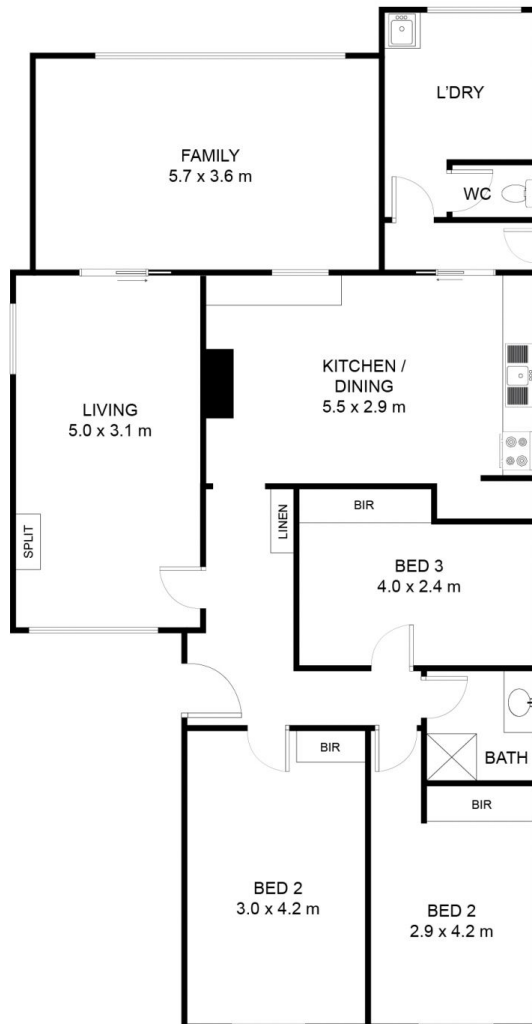
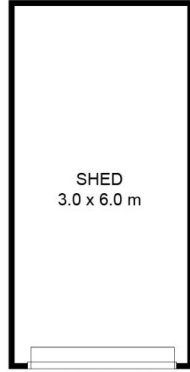


Olivia Farmer
0422 406 018

[For full version visit the website](http://www.malseeds.com.au)

447-453 MINGBOOL ROAD, MIL-LEL

This drawing is for illustration purpose only. All measurements are approximate
only information intended to be relied upon should independently verified.

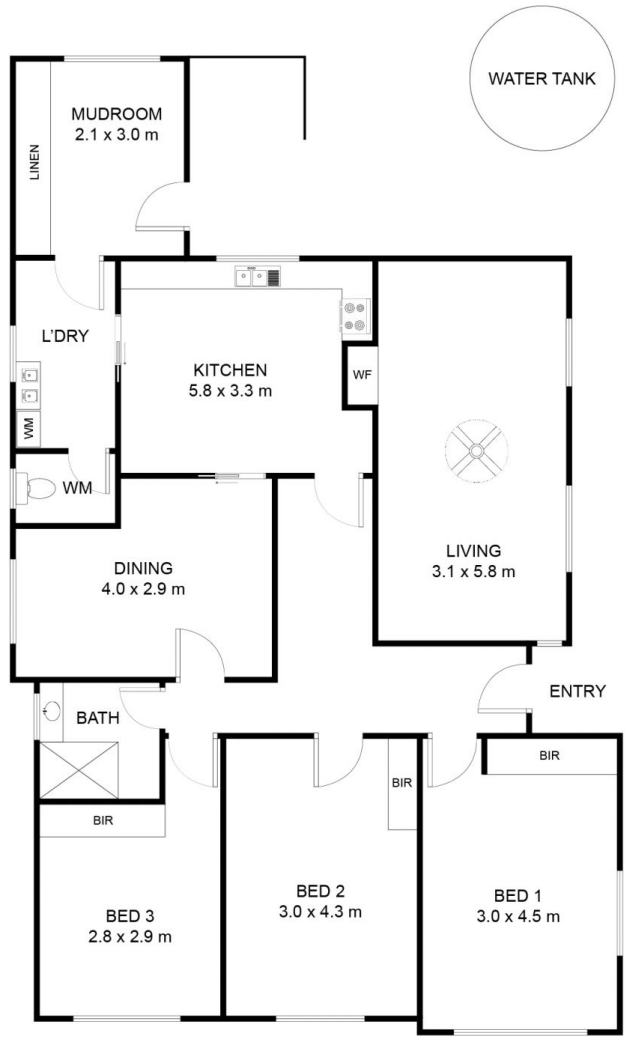
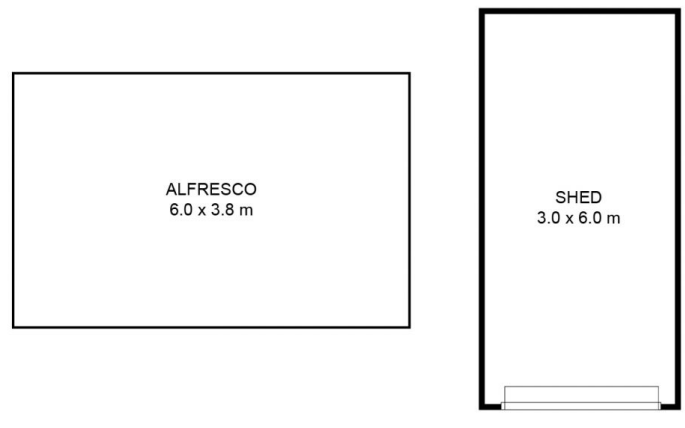


HOUSE 1

INTERNAL AREA: 98.92 sqm
EXTERNAL AREA: 18 sqm
TOTAL AREA: 116.92 sqm

447-453 MINGBOOL ROAD, MIL-LEL

This drawing is for illustration purpose only. All measurements are approximate only information intended to be relied upon should independently verified.



HOUSE 2

INTERNAL AREA: 104.5 sqm
EXTERNAL AREA: 40.8 sqm
TOTAL AREA: 145.3 sqm