



1A Arbor Street Mount Gambier SA

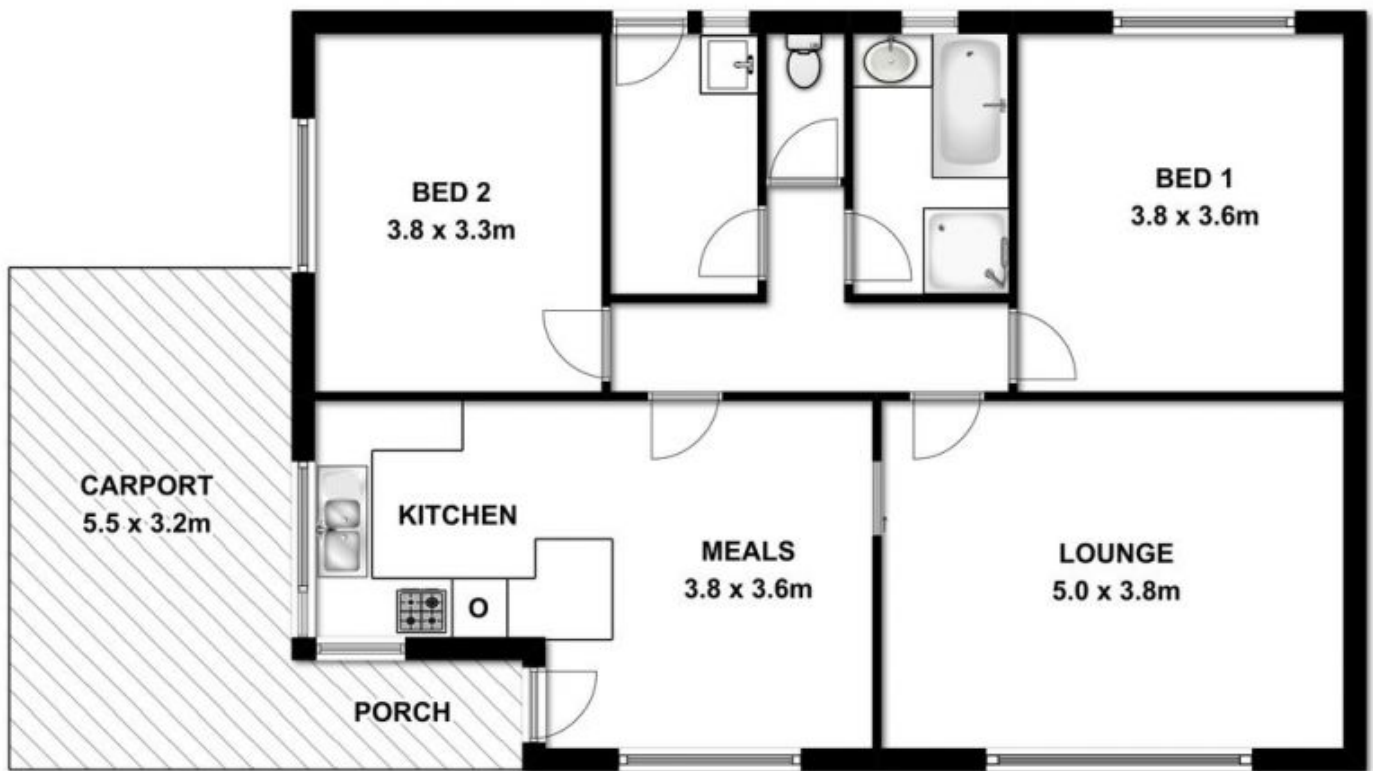
2 1 1

Malseeds Property Management are pleased to present this low maintenance & well maintained, two bedroom stand alone unit, located within walking distance of the CBD & Reidy Park Primary School. Other great features include:

- * Two large carpeted bedrooms
- * Open plan kitchen & dining, equipped with electric cooking and gas heating
- * Spacious lounge room with air-conditioning & gas heating
- * Bathroom with separate shower and bath
- * Low maintenance yard & undercover parking

If this property sounds just right for you, apply online using 1form (click "apply online" button), or come into the office and speak to a member of our fantastic Property Management team.

Land Size : 547 sqm
View : <http://www.malseeds.com.au/lease/sa/south-east/mount-gambier/residential/unit/5708450>



This drawing is for illustration purpose only. All measurements are approximate only and information intended to be relied upon should be independently verified.