



14 Chute Street Mount Gambier SA

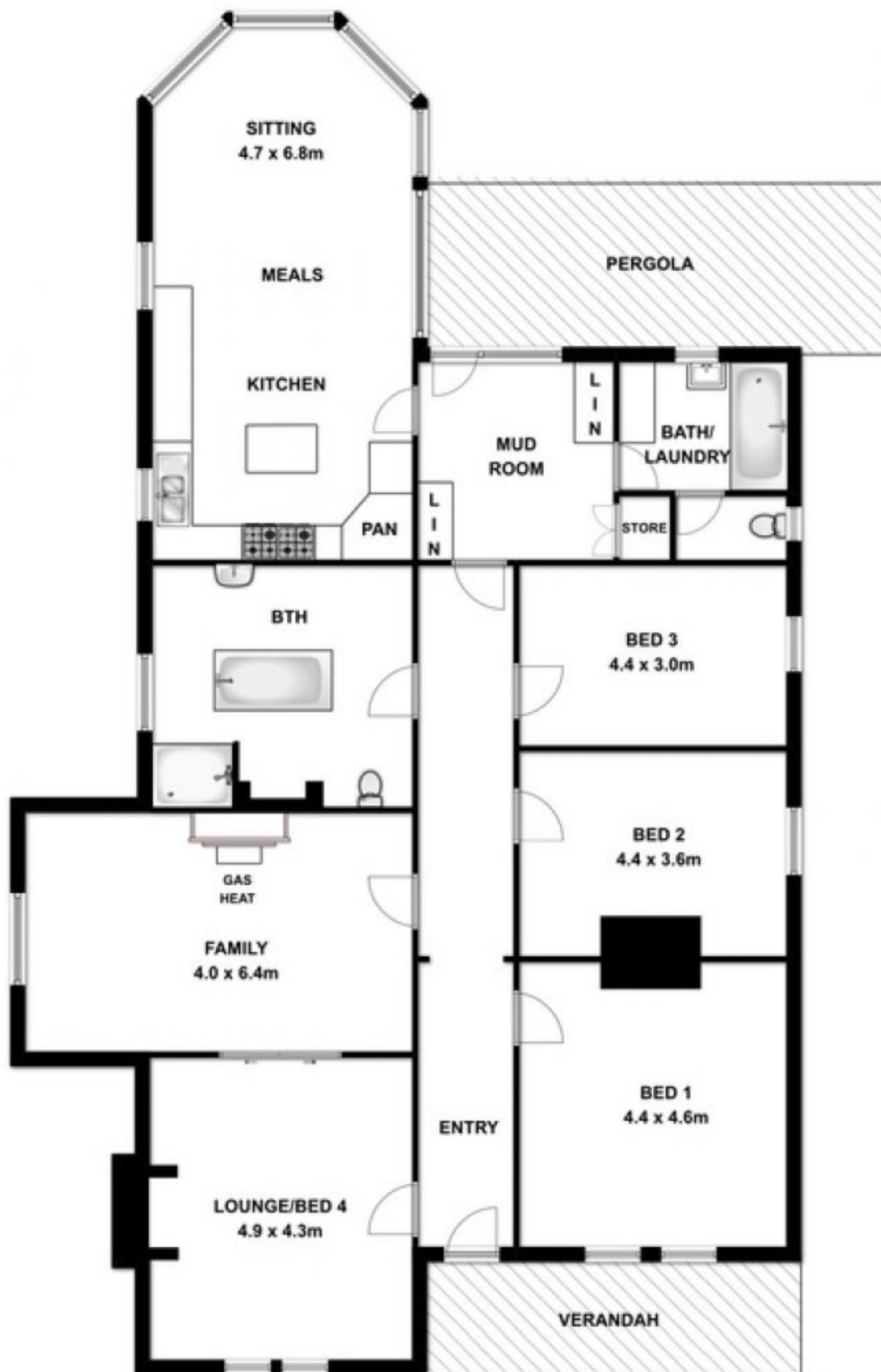
4 2 2

Built in 1904 and located in the ever popular Vansittart Park area of Mount Gambier, I am pleased to present for sale this beautiful, dolomite fronted, character stone home. With undeniable street appeal and old world charm, this family home offers an opportunity for one lucky buyer to establish themselves for years to come.

Price : \$ 405,000
Land Size : 777 sqm
View : <http://www.malseeds.com.au/sale/sa/south-east/mount-gambier/residential/house/5708142>

Entering the home you are greeted by polished timber flooring, leadlight windows, feature corning and high ceilings that are synonymous with this era of property.

It offers 3 well sized bedrooms, with the option of a huge 4th main bedroom or extra living space separated by original timber sliding doors from the main lounge area, with original features such as mantled fireplaces and unique ventilated vertically sliding windows. Rooms 1 & 3 include high quality carpets adding warmth and luxury.



This drawing is for illustration purpose only. All measurements are approximate only and information intended to be relied upon should be independently verified.