



3 George Street Southend SA

3 1 5

Enjoy the lifestyle of quiet Southend and inspect this lovely home

Extensively renovated large Limestone home

Wide front door entrance opens into a stunning tiled Open plan Kitchen, dining and casual lounge with S/Combustion heating

Internal cavity sliding doors also reveal a Cosy 2nd formal living room has R/Cycle

Heading through to the bedrooms is a retreat/office or ideal playroom which has a storage room and laundry with linen press

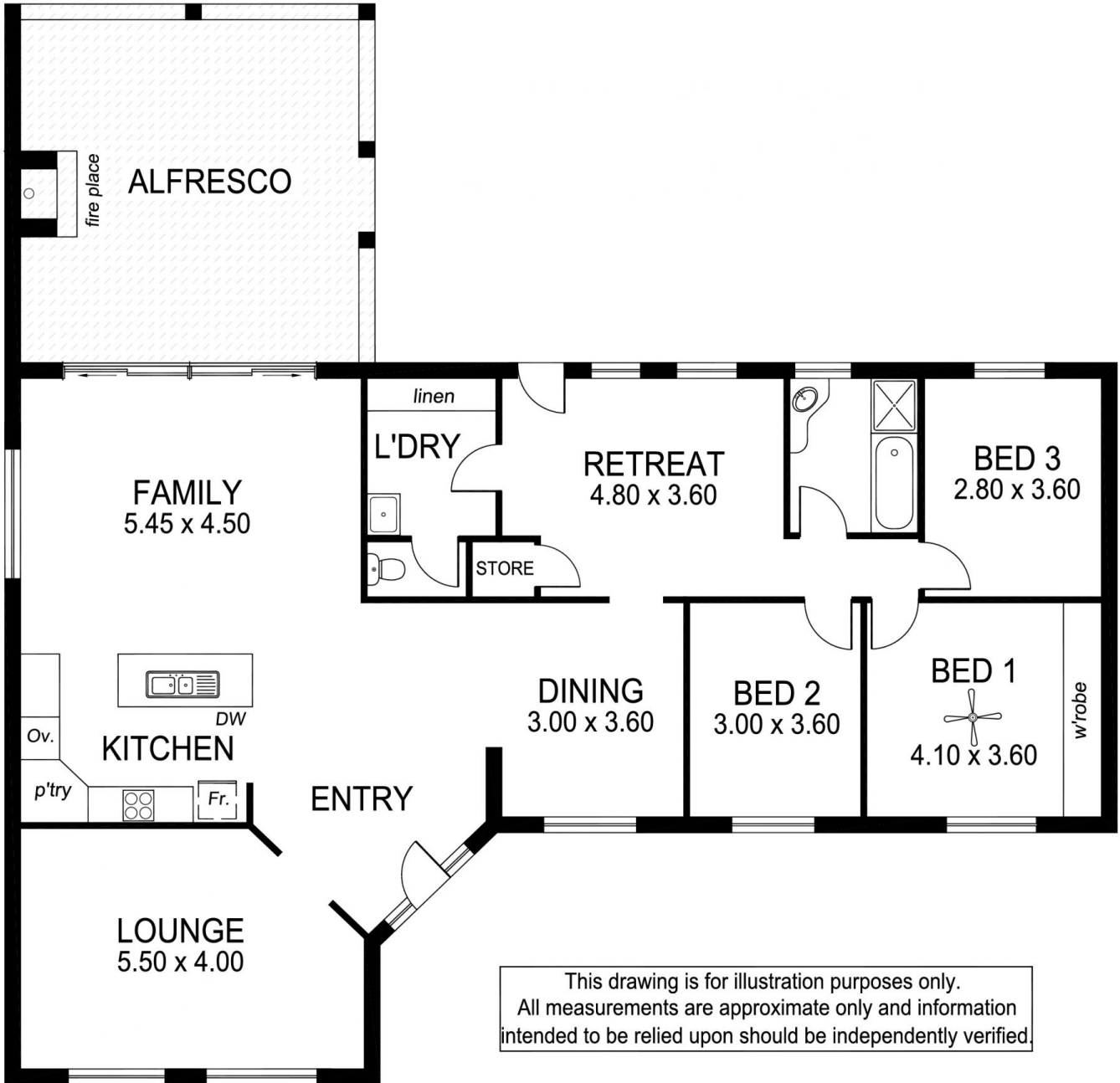
The kitchen is the hub of the home and offers Island bench breakfast bar. Gas H/P's, Electric wall oven, dishwasher, pantry and double stainless steel fridge will be included.

3 carpeted bedrooms Main with full built-ins

Outdoor decked Alfresco dining is an absolute winner with this property and makes for easy social entertaining indoor

Land Size : 1561 sqm

View : <http://www.malseeds.com.au/sale/sa/south-east/southend/residential/house/5707632>



This drawing is for illustration purposes only.
All measurements are approximate only and information
intended to be relied upon should be independently verified.